

Solution brief

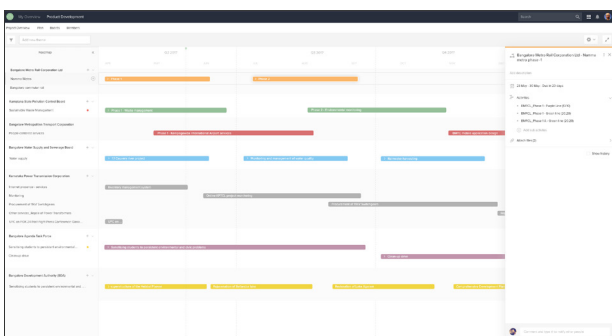
What's New in Projectplace November and December 2017

Winter is here with a couple of monthly Projectplace releases! We are pleased to provide new capabilities that allow users greater customization for roadmaps, streamlined project invitations, and visibility into project status at a glance.

Roadmap phases

(November release)

Running a marketing campaign or updating a product roadmap can be a constant struggle, especially when planning six to twelve months into the future. Priorities can change at the drop of a hat, so it's important to plan iteratively or in phases. With the newest updates to our Roadmap workspace, you can do just that. Plan your long-term initiatives in a phased approach, include steps to keep milestones top of mind for your team, and ultimately make large and time consuming work items more easy to manage.



Invite teams

(November release)

Inviting an endless number of people to a project can be a pain. With the new ability to invite teams directly to

workspaces it doesn't have to be. Rather than listing all of your collaborators out by name, just invite their team and get right to collaborating.

Delete KPIs

(Coming in December)

With the Projectplace Portfolio tool, tracking key performance indicators and progress is simple. In December we will roll out the ability to delete unused KPIs from your account. You can now make sure all your portfolio data is up to date while getting rid of outdated performance indicators.

Card and Activity dashboards

(Coming in December)

Easily track project status at a glance with the new Card and Activity dashboards in the Workspace Overview. Quickly understand how many activities and cards are completed, overdue, or upcoming without having to dig into the rest of the workspace.

Other enhancements

Over the last month, we have also released a number of performance related enhancements and bug fixes. Our main goal is to provide an efficient, effective, performant space to collaborate and execute on work.